



*Endure*walls™ BY TEDLAR®
Style That Endures

DuPont™ Tedlar™ Wallcoverings

Avant-Garde Collection

Style that Endures

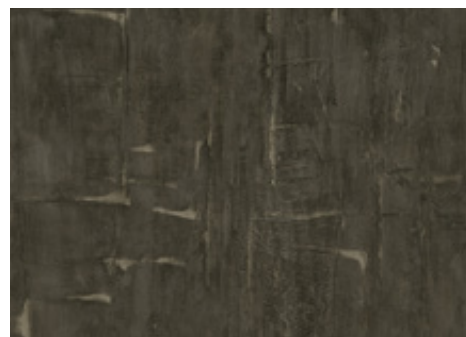
Endure Walls™ is North America, Latin America, and Europe's only source and supplier of DuPont™ Tedlar™ Wallcoverings. Designed with designers, architects, property owners, hospitality, and facility managers in mind, these wallcoverings are artistically pleasing, hygienic, stain proof, and the most abrasion and chemical resistant Type I and Type II Vinyl Wallcoverings available. Having met Greenguard Gold Indoor Air Quality and Greenguard Mold requirements, Endure Walls™ Tedlar™ Wallcoverings give you the peace of mind that your designs will stand up to the strictest sustainability and sanitary demands. All of this combined with our timeless, fresh look and low maintenance costs give you the durability, cleanability, and affordability your space deserves.



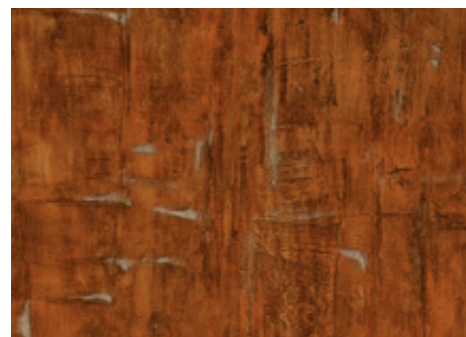


ALLOY

TEDLAR™ WALLCOVERING - TYPE II (20 OZ. / LIN. YD.)



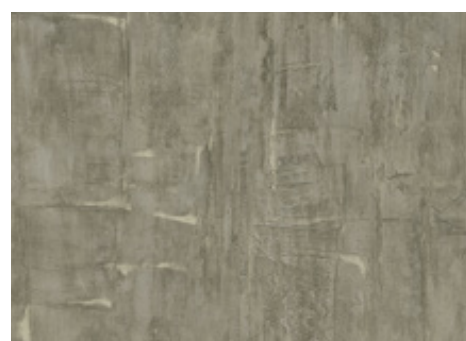
Carbon
D15543716



Copper
D15543717



Steel
D15543718



Aluminum
D15543719



Magnesium
D15543720

ALLOY
Avant-Garde Collection





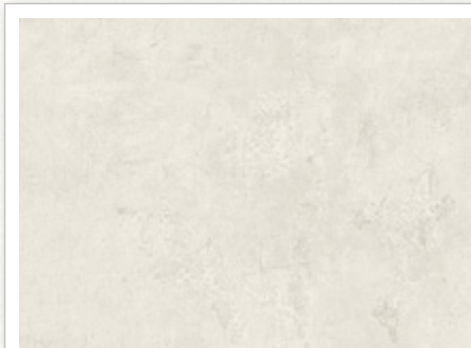
SET IN STONE

Avant-Garde Collection



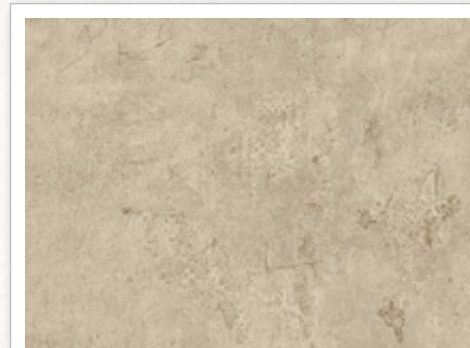
SET IN STONE

TEDLAR™ WALLCOVERING - TYPE II (20 OZ. / LIN. YD.)



Salt

D15543721



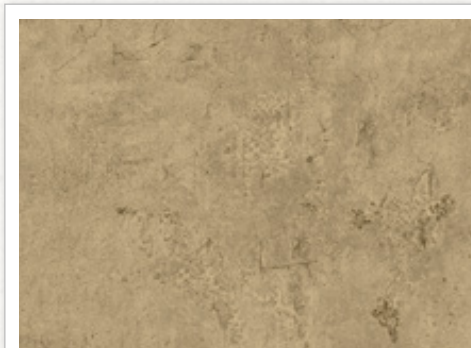
Sand

D15543722



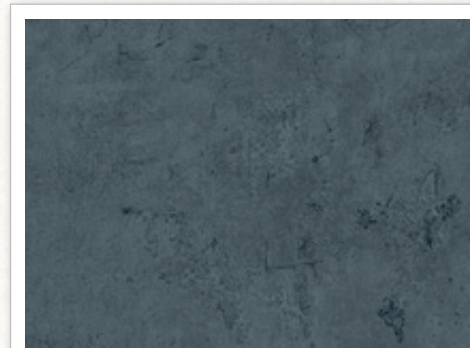
Pebble

D15543723



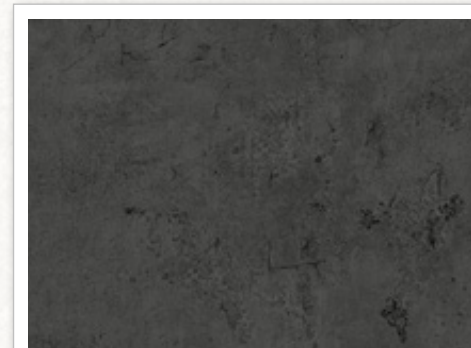
Clay

D15543724



Cement

D15543726



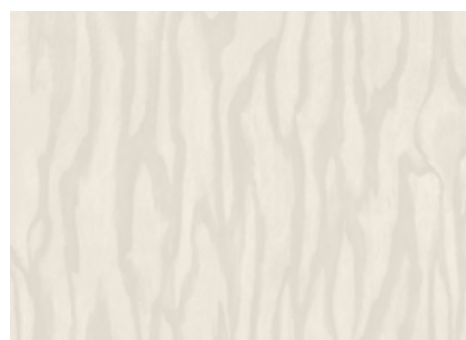
Slate

D15543727



SEQUOIA

TEDLAR™ WALLCOVERING - TYPE II (20 OZ. / LIN. YD.)



White

D15543728



Ash

D15543729



Hazelnut

D15544001



Greige

D15543730



Barron

D15543731

SEQUOIA
Avant-Garde Collection





ROCCIA

TEDLAR™ WALLCOVERING - TYPE II (20 OZ. / LIN. YD.)

ROCCIA

Avant-Garde Collection



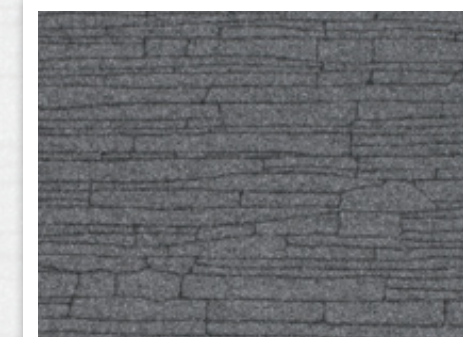
Crema

D15548882



Noce

D15548861



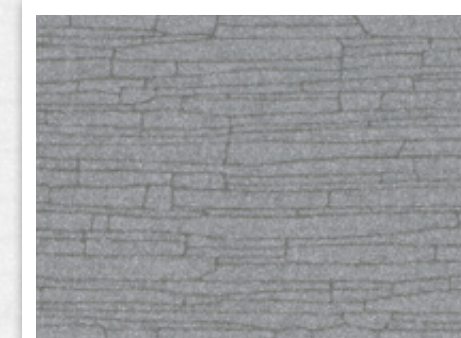
Nero

D15548860



Azure

D15548883



Grigio

D15548859



TRAVERTINO

TEDLAR™ WALLCOVERING - TYPE II (20 OZ. / LIN. YD.)



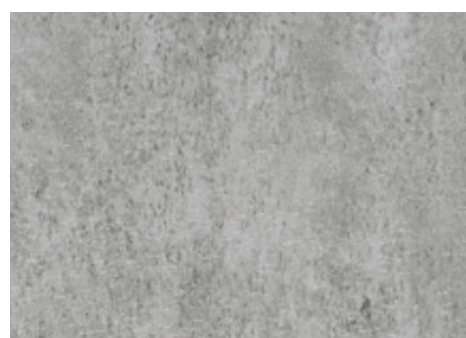
Ivory

D15546080



Beige

D15546081



Silver

D15546079



Black

D15546144

TRAVERTINO
Avant-Garde Collection



WE HAVE YOU COVERED

For over 30 years, we have maintained a partnership with DuPont™ that continues to grow today. As a result, all of Endure Walls™ DuPont™ Tedlar™ Wallcoverings are manufactured and stocked in the United States and ready to ship immediately anywhere in the North America, Latin America, and European markets.

At Endure Walls™, our National Commercial Account Executives are available to assist you with all of your design needs, customer service, accounting, warehouse, and logistical demands that will guarantee top-level service for all of your requests and projects.

No multiple distribution. Endure Walls™, being the single-source supplier, leaves you with the confidence that wherever your project is located, you will receive the same pricing, quality, and service you demand!

DESIGN AND DURABILITY

Endure Walls™ Tedlar™ Wallcoverings will give you the design you need with the durability you want to maximize your projects and business.

- DuPont™ Tedlar® offers stocked exclusive wallcovering series with new launches each quarter
- USA-manufactured product
- Easy 1,2,3 Custom Design and Color Program
- Type I and Tedlar™ Wallcovering - Type II that exceeds Type III durability
 - Stain proof
 - Abrasion resistant
 - Chemical resistant
 - Mold, mildew, bacteria, MRSA, E. coli resistant
 - UV resistant
- Exceeds ASTM E84 Class A Fire Rating

SUSTAINABILITY

- Greenguard Gold IAQ (Indoor Air Quality)
- Greenguard Mold Validated (Does Not Support Mold Growth)
- HPD (Health Product Declaration)
- Produced using water-based, nontoxic ink, and adhesives combined with low VOC emitting films. No heavy metals or ozone-depleting chemicals are used in the manufacturing process.

DuPont™ Tedlar™ Wallcoverings

SPECIFICATIONS

Type II Product Specifications

Type	Tedlar™ Wallcovering - Type II	
Weight	20 oz. / lin. yd.	620.1 g. / lin. m.
Width	52" - 54"	132.08 cm. - 137.16 cm.
Length	30 lin. yd.	27.432 lin. m.
Finish	Tedlar® Film	
Backing	Nonwoven	
Flame Resistance	Passes ASTM E84 Class A	
Stain Resistance	Exceeds Stain Resistance Test CCC-W-408D	
Abrasion Resistance	Meets Type III Abrasion Resistance CCC-W-408D	
Scrubability	Meets Type III Scrubability CCC-W-408D	
Microbial Resistant	Passes ASTM G21 and JIS Z 2801	

Type I Product Specifications

Type	Tedlar™ Wallcovering - Type I	
Weight	15 oz. / lin. yd.	465.1 g. / lin. m.
Width	52" - 54"	132.08 cm. - 137.16 cm.
Length	30 lin. yd.	27.432 lin. m.
Finish	Tedlar® Film	
Backing	Osnaburg	
Flame Resistance	Passes ASTM E84 Class A	
Stain Resistance	Exceeds Stain Resistance Test CCC-W-408D	
Abrasion Resistance	Meets Type III Abrasion Resistance CCC-W-408D	
Scrubability	Meets Type III Scrubability CCC-W-408D	
Microbial Resistant	Passes ASTM G21 and JIS Z 2801	



Keeping it clean and hygienic.

WHAT YOU NEED TO KNOW.

Whether it's germs, permanent marker, or chocolate sauce, maintaining pristine walls can be a challenge for some, but not for Endure Walls™ Tedlar™ Wallcoverings. For more than 50 years, DuPont™ Tedlar® PVF technology has been a leader in the industry for protective surfaces and is now applying this proven technology to wallcoverings. With Endure Walls™ Tedlar™ Wallcovering, we have the classic designs you love as well as the cleanability, durability, and affordability you need to maximize your projects and business.

TYPE I AND TYPE II TEDLAR™ WALLCOVERINGS THAT EXCEED TYPE III DURABILITY



- **Bacteria, Mold, and Mildew Resistant.** Tedlar™ Wallcoverings are not degraded by bacteria, mold, or mildew and do not provide nutrients to assist growth. It's so good it's Greenguard Mold validated.
- **Chemical Resistant.** Because Tedlar™ Wallcoverings hold up to bleach, alcohol, and alkalis cleaners, you can disinfect easily. Proven to withstand 30 years in a high-traffic area of a hospital and still look like new.
- **Hygienic.** Tedlar™ Wallcoverings' ability to stand up to the harshest cleaning chemicals means you have easy-to-clean walls that will assist in maintaining a hygienic environment for years to come.
- **Stain Proof.** The chart on the back indicates various stains that are likely to be encountered in high-traffic areas and lists the most effective cleaning agents for easy removal. Repeated heavy cleaning does not affect Tedlar™ Wallcoverings.
- **Indoor Air Quality.** Tedlar™ Wallcoverings are Greenguard Gold IAQ certified. It meets strict chemical emissions limits and has been tested for more than 10,000 chemicals making it perfect for all your projects, including schools and healthcare facilities with sensitive individuals.



Made in the USA.



Wallcovering Conversions

COMMERCIAL GOODS (52"/54")

Linear yard = 13.5 sf (4.5' x 3')

Square yard = 9 sf (3' x 3')

Roll = 30 linear yards

Coverage per 30 yard roll = 405 sf

CONVERSIONS (52"/54")

Figuring Square Footage:

- Length of wall multiplied by height of wall

Convert Square Feet to Linear Yards:

- Divide total square footage by 13.5 = Number of yards
- Divide by 12 to include waste or 9 for patterns with large repeats

Convert Square Yards to Linear Yards:

- Multiply square yard quantity by 9, then divide the result by 13.5
- Divide by 12 to include waste or 9 for patterns with large repeats

Convert to Square Yards:

- Divide number of linear yards by 13.5, then multiply result by 9

Convert Linear Feet to Linear Yards:

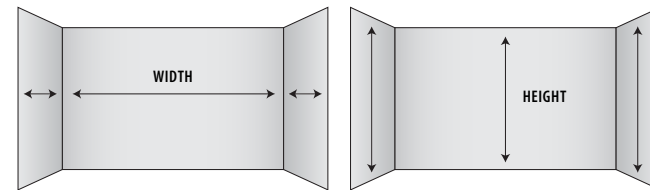
- Divide number of linear feet by 3 = Number of linear yards

Convert Square Meters to Square Yards:

- 1 square meter = 1.19599 square yards

Price per Square Foot Conversions:

- Divide the price per linear yard by 13.5 = Price per SF
(Use to compare costs to paint or tile that is priced by the square foot.)



HOW TO CALCULATE THE DIMENSIONS OF YOUR WALLS

Calculation for Square Feet to Linear Yards (52"/54" Wide)

1. Multiply width by height of wall = Total square feet (per wall)
2. Repeat Step 1 per wall needing wallcovering
3. Add together total square feet of ALL wall measurements
= Total square feet of project
4. Total square feet of project and divide by factor:
13.5 = NO waste/overage
12 = Waste/overage added
9 = Large repeat (18" or larger)
5. Calculation in Step 4 = Total linear yards for project

Dividing Factors for Wallcovering (52"/54" Wide)

1. 13.5 = Total of wallcovering (No overage or waste)
2. 12 = Total of wallcovering (Includes waste)
3. 9 = Total of wallcovering with large repeat (18" or more)

Calculation for Square Meter to Linear Yards (52"/54" Wide)

1. Square meter multiplied by 1.19599 = Total square yards
2. Total square yards multiplied by 9, then divide by factor 12
= Total linear yards (Dividing by factor 12 includes waste)