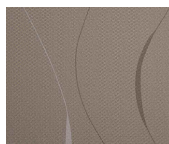
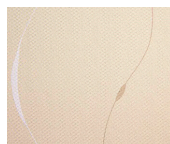




Swiss Ribbon



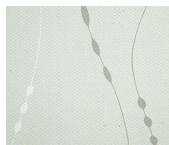
Hearth
D15529396



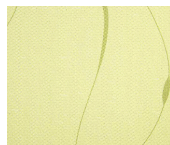
Fawn
D15529393



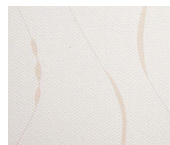
Dove
D15529394



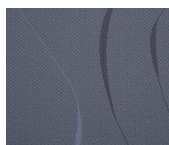
Sage
D15529399



Pistachio
D15529395



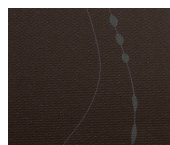
Bisque
D15529397



Graphite
D15529398



Parchment
D15529400



Mahogany
D15529401

Product Specifications

Type	Type II Wallcovering
Weight	20 oz./lin. yd.
Width	52"-54"
Finish	Tedlar® Laminate
Backing	Nonwoven
Installation	Straight Match, 18" Repeat
Standards	Meets or exceeds criteria for CCC-W-408D, ASTM F793, ASTM E84, NFPA 286, ASTM G21, JIS Z 2801

Type III Surface Protection in a Type II Weight

DuPont™ Tedlar™ Wallcoverings offer exceptional stain and abrasion resistance. They provide a protective barrier against almost any staining agent and most cleaning solvents including bleach, alcohols, ketones (acetone, MEK) and even strong acids and alkalis. This barrier ensures staining agents can be easily cleaned leaving an undamaged, good as new appearance that can be maintained over a long period of time. Tedlar™ Wallcoverings Type II vinyl wallcovering passes the CCC-W-408D scrubability and abrasion test for Type III wallcovering.

Proven Performance History

For over 50 years, DuPont™ Tedlar® PVF technology has been a leader in protective surface applications in markets ranging from aircraft interiors, automotive parts, and graphics overlaminates. Now, DuPont is applying this proven technology to our line of Tedlar™ Wallcoverings. Their stain resistance, ease of cleaning, and broad chemical compatibility make Tedlar™ Wallcoverings the highest-performing, most durable, and freshest looking Type II wallcoverings on the market.

Mold Resistance

The surface of Tedlar™ Wallcoverings does not provide nutrients to enable mold or bacteria growth. Tedlar™ Wallcoverings are certified to pass ASTM G21 and JIS Z 2801 by MicroStar Labs, Chicago, IL.

Fire and Smoke

Tedlar™ Wallcoverings has low flame spread and smoke development ratings, exceeding the ASTM E84 Class A rating.

Pattern Appearance and Color

All patterns are designed to simulate natural materials. Subtle variations in color, texture & shading should be anticipated as these are part of the manufacturing process and add to the richness and beauty of the product.

View our website at: www.endurewalls.com