



Sisal

52" - 54" Type II 20oz. Contract Wallcovering

PHYSICAL PROPERTIES

TOTAL WEIGHT:

U.S. UNITS	METRIC UNITS
20.0 oz per linear yard	619 grams / linear meter
13.3 oz per square yard	451 grams / square meter

BACKING: Nonwoven

WIDTH: 52" - 54" (1.32m - 1.37m)

DESIGN: Random / Reverse Hang

1 YEAR WARRANTY AGAINST MANUFACTURING DEFECTS

*Use only adhesives and primers as recommended by the manufacturer.

All patterns stocked are in 30 linear yard bolts

Copyright © 2021 Questex, All Rights Reserved.
465 Devon Park Drive, Wayne, PA 19087 USA
www.wallquest.com/questex - MADE IN U.S.A.

TECHNICAL SPECIFICATIONS

FIRE HAZARD CLASSIFICATION RESULTS:

- TESTED IN ACCORDANCE WITH ASTM E-84 TUNNEL TEST
- CLASS "A" FIRE RATED
- FLAME SPREAD 25
- SMOKE DEVELOPED 20
- EN13501 (B-s1,d0)

This product is intended for use in buildings that are properly designed and maintained to avoid moisture infiltration, condensation and/or accumulation at wall cavities and wall surfaces, particularly in warm, humid climates.

FEDERAL SPECIFICATIONS:

Questex exceeds G.S.A Federal Specification CCC-W-408D for Type II materials using test procedures detailed in Federal Specifications CCC-T-191-B. This wallcovering passes The National Fire Protection Association NFPA286 Corner Burn Test.

ANTI-MICROBIAL FEATURES:

Vinyl wallcoverings contain bactericides and mildew inhibitors to discourage the growth of mold and mildew under normal conditions.

Sisal

52" - 54" Type II 20oz. Contract Wallcovering



SISAL



En Blanc

TS87007



Caster Sugar

TS87000



Mirage

TS87008



Rooibos

TS87005



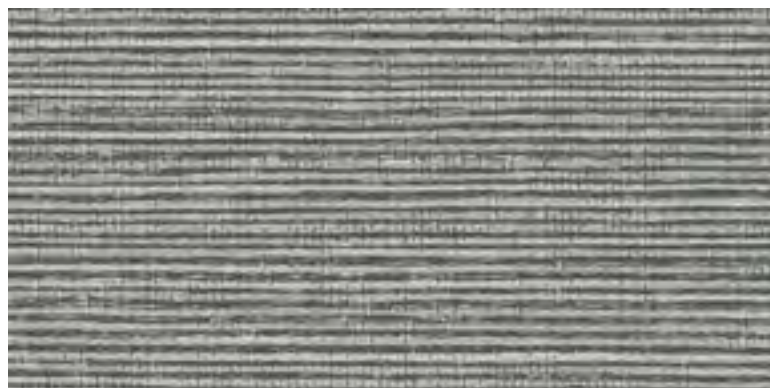
Campfire Smoke

TS87025



Yerba

TS87035



Greyhound

TS87010



Raw Umber

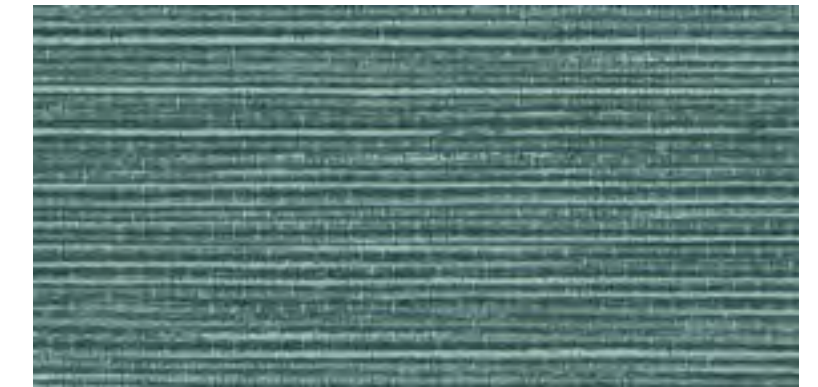
TS87015

SISAL



Roca

TS87003



Meadow

TS87016



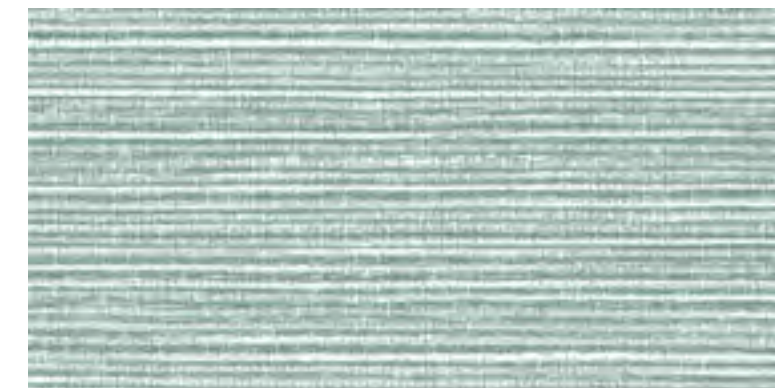
Woodland

TS87017



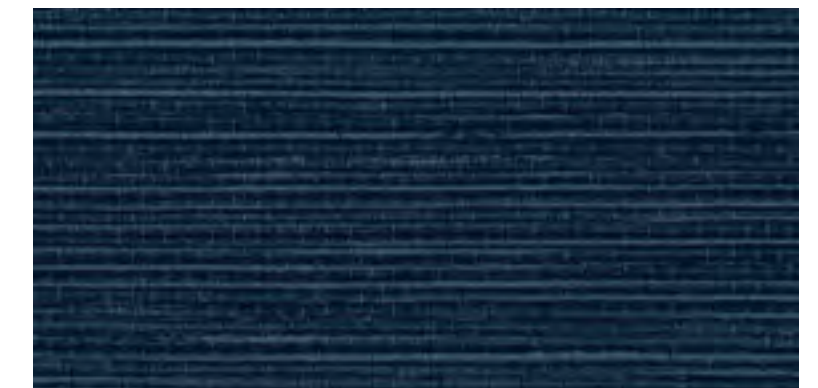
Spanner

TS87028



Calm Waters

TS87006



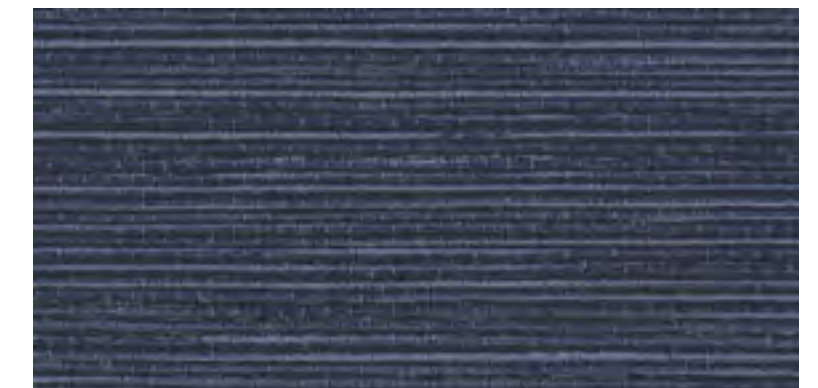
Resort

TS87032



Alpha

TS87012



Caspian

TS87022