



Urban Cork

52"- 54" Type II 20oz. Contract Wallcovering

PHYSICAL PROPERTIES

	U.S. UNITS	METRIC UNITS
Total Weight:	20.0 oz per linear yard 13.3 oz per square yard	619 grams per linear meter 451 grams per square meter
Backing:	Nonwoven	Nonwoven
Width:	52"- 54"	1.32m - 1.37m

All patterns stocked are in 30 linear yard bolts

DESIGN INFORMATION

VERTICAL REPEAT	MATCH
Random	Random/Reversible

FEDERAL SPECIFICATIONS

Questex exceeds G.S.A Federal Specification CCC-W-408D for Type II materials using test procedures detailed in Federal Specifications CCC-T-191-B. This wallcovering passes The National Fire Protection Association NFPA286 Corner Burn Test.

FIRE HAZARD CLASSIFICATION RESULTS

- TESTED IN ACCORDANCE WITH ASTM E-84 TUNNEL TEST
- CLASS "A" FIRE RATED
- FLAME SPREAD 25
- SMOKE DEVELOPED 45

This product is intended for use in buildings that are properly designed and maintained to avoid moisture infiltration, condensation and/or accumulation at wall cavities and wall surfaces, particularly in warm, humid climates.

ANTI-MICROBIAL FEATURES

Vinyl wallcoverings contain bactericides and mildew inhibitors to discourage the growth of mold and mildew under normal conditions.

5 YEAR WARRANTY AGAINST MANUFACTURING DEFECTS

Use only adhesives and primers as recommended by the manufacturer.

COPYRIGHT

Copyright © 2016 Questex, All Rights Reserved. 465 Devon Park Drive, Wayne, PA 19087 USA
www.wallquest.com/questex - MADE IN U.S.A.

Urban Cork

52"- 54" Type II 20oz. Contract Wallcovering





Alder

QX17006



Stone Ash

QX17008



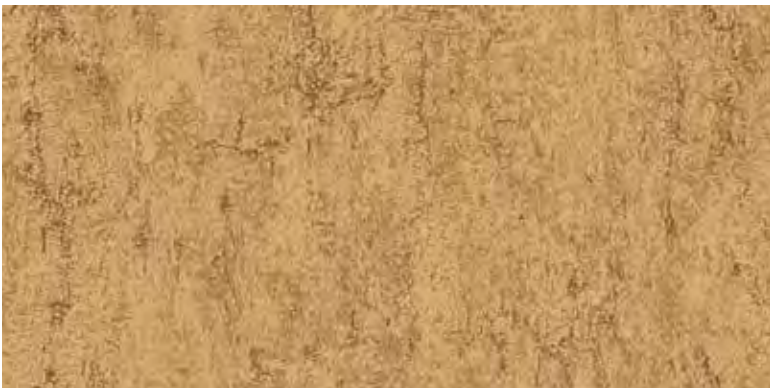
Teak

QX17005



Shale Oak

QX17036



Elm

QX17015



River Rock

QX17018



Golden Shale

QX17025



Sandstone

QX17046

QUESTEX

Produced in a beautiful array of colors, we offer extensive choices for your next commercial project.

QUESTEX

Produced in a beautiful array of colors, we offer extensive choices for your next commercial project.



Cyan Ocean

QX17014



Volcanic Ash

QX17020



Moonstone

QX17028



Rosewood

QX17001



Sand Oak

QX17026



Blue Pine

QX17002



Pacific Opal

QX17004



Aspen

QX17010